

## Evaluation of the Effects of Exposure to Copper Sulfate on some Eco-physiological Parameters in Silver Carp (*Hypophthalmichthys molitrix*)

Aliakbar Hedayati<sup>\*1</sup>, Zahra Ghaffari<sup>2</sup>

Received: 20.02.2013

Accepted: 10.03.2013

### ABSTRACT

**Background:** Copper is a trace element vital to life, but the toxic effect of water pollution with it on fish is now exhibited. Fish blood is susceptible to contamination-induced stress and its alternation due to the hematological and immunological parameters can be utilized as toxicity indices of xenobiotics.

**Methods:** In this study, juvenile species of silver carp with average weight of 200gr were kept in laboratory conditions for seven days in a 400l tank. One control group consisted of 21 fish stored in a fiberglass tank. The fish were rendered unconscious immediately with 200ppm clove powder. Blood samples were drawn from tail blood vessels by heparinized syringes and saved without delay in ice. Data analysis was done by t-test and ANOVA using SPSS version 19.

**Results:** The immunological (lymphocyte, neutrophil), hematological (Hb, Ht, RBC, MCH, MCHC, WBC) and biochemical (Glucose, Cortisol) indices of silver carp (*Hypophthalmichthys molitrix*) were investigated at low (10%LC50) and high (50%LC50) concentrations of CuSO<sub>4</sub> for 96h. At both concentrations, Ht, Hb, MCV, RBC, and lymphocyte were significantly ( $P<0.05$ ,  $P<0.01$ ) lower than control group whereas MCH, MCHC, WBC, glucose, cortisol, neutrophil were significantly ( $P<0.05$ ,  $P<0.01$ ) larger in comparison with the corresponding control group.

**Conclusion:** The main finding of this study is that CuSO<sub>4</sub> concentrations (low and high) may cause some alternations in the hematological, biochemical and immunological parameters of the studied fish. Assessment of these indices can supply a useful indicator of CuSO<sub>4</sub> of water bodies. It appears that MCHC is an appropriate biomarker of CuSO<sub>4</sub> in silver carp (*H. molitrix*).

**Keywords:** Aquatic Ecosystems, Heavy Metals, Pollutions, Toxicology.

IJT 2013; 887-893

### INTRODUCTION

Copper contamination from normal and anthropogenic sources, like mine washing, agricultural leaching and proximate implementation appears as algacide and molluscicide in the aquatic environment [1]

High densities of copper are observed in some ecological aquatic systems collecting vineyard runoff water and groundwater [2]. Copper is a trace element vital to life, but the toxic influence of water pollution with this metal on fish is now manifestly exhibited [3].

As shown in the past, in multiple vertebrates, copper chiefly accumulates in

fish liver wherein its biological effects are significant [3]. Low copper concentrations quickly cause hepatic disturbances in fish [4].

The toxic influence of copper is connected to its valence for catalyzing oxidative responses, leading to the yield of reactive oxygen species [5]. These extremely reactive compounds may also cause tissue changes and alteration of some physiological reactions of fish, leading to oxidative stress [6]. Furthermore, copper can influence the immunological status of fish [7].

The main body part organ for copper storage in fish is liver [4]. Fish blood is susceptible to contamination-induced stress and its interchanging caused by the

1- Department of Fishery, Gorgan University of Agricultural Science and Natural Resources, Gorgan, Iran.

2- MSc Student, Gorgan University of Agricultural Science and Natural Resources, Gorgan, Iran.

\*Corresponding Author: E-mail: hedayati@gau.ac.ir

hematological and immunological parameters can be utilized as toxicity indices of xenobiotics [8]. In action, fish blood is greatly utilized in toxicological investigation and environmental monitoring as a favorable indicator of physiological and pathological alterations. Hematological indices and blood parameters could be practical to the assessment of the effects of contaminants on fish [9]. Hematological indices, such as  $MCV^1$ ,  $MCH^2$  and  $MCHC^3$ , hematological parameters, like  $Hb^1$ ,  $Hct^2$ ,  $RBC^3$ , and  $WBC^4$  amount, and biochemical parameters, like glucose, are greatly used to assess the toxic effect of environmental pollutants [10].

Silver carp is probably the most plentiful freshwater fish because of its fast growth [11]. Although the produce of silver carp is expanding annually, the processing of this fish is restricted. In this study, tested variations of biochemical parameters, including glucose, cortisol, and hematological and immunological changes in silver carp (*Hypophthalmichthys molitrix*) were exposed to  $CuSO_4$ .

## MATERIALS AND METHODS

### *Preparation of Fish in Experimental Conditions*

Juvenile species of silver carp with average weight of 200gr were provided by Fisheries Research Laboratory. The fish were adapted to laboratory conditions for seven days in a 400-liter tank. All fish were nourished with trading pellet twice a day. They were exposed to a high concentration of 50%  $LC_{50}$  (0.49 mg/l)  $CuSO_4$  and a low concentration of 10%  $LC_{50}$  (0.09 mg/l) for periods of 24h, 48h, and 96h for static toxicity examination, presented in a tank of 400L, groups of 21 each. A control group consisting of 21 fish was preserved in a fiberglass tank without exposure to the toxicant. Three repeats were executed for each experimental stage. Temperature, dissolved oxygen, pH, and conductivity were purged during the experiment [12].

### *Process of Collecting Fish Specimens and Blood Appraisal*

Fish were rendered unconscious immediately with 200ppm clove powder.

Blood samples were quickly obtained from tail blood vessel by heparinized syringes and saved without delay on ice [13]. Calculation of the blood indices were carried out on fresh blood. Numbers of blood leukocytes and erythrocytes were executed by diluting heparinized blood with Giemsa stain at 1:30 dilution and the cells were counted using a Neubauer hemocytometer through light microscopy [14]. The leukocyte differential computation was done in peripheral blood spots stained by Merck Giemsa [15], giving the neutrophils quantity of differential neutrophils and the mononuclear quantity of differential lymphocytes, eosinophils, and monocytes. Hematocrit values (Ht%) were shortly determined after gathering samples by locating fresh blood in glass capillary tubes and centrifuging them via a micro-hematocrit centrifuge for 5 minutes at 10000 rpm (Hettich, Germany). Then dimensions of the packed cell capacity were determined [16]. Hematocrite interpretation was carried out with the help of a microhematocrit reader. Hemoglobin levels (Hb mg/l) were colorimetrically measured in cyanomethemoglobin [17]. Erythrocytes indices, MCH (mean corpuscular hemoglobin), MCHC (mean cell hemoglobin concentration), and MCV (mean corpuscular volume) were evaluated in RBC, Ht, and Hb [17].

### *Statistical Analysis*

To find out meaningful differences for examining the effect of copper on blood parameters an analysis of variance (ANOVA) with Duncan Post Hoc was utilized.

Pearson coefficients of correlation(r) were computed between copper concentrations and blood parameters to examine the relationship between bioaccumulation and its impacts. To ascertain the kinship between copper concentration and blood parameters multiple regressions were used. Data were analyzed statistically at  $P < 0.05$  and expressed as  $\text{mean} \pm \text{SD}$  ( $\bar{X} \pm \text{SD}$ ).

### *Ethical Issues*

The experimental protocols were approved by the Medical Ethics Committee of the organizations that supported this study.

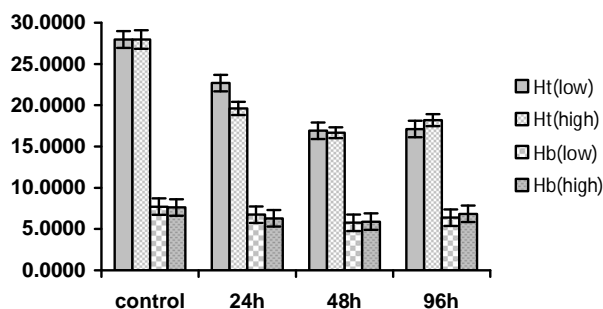
## RESULTS

### *Lc50 Value (96h)*

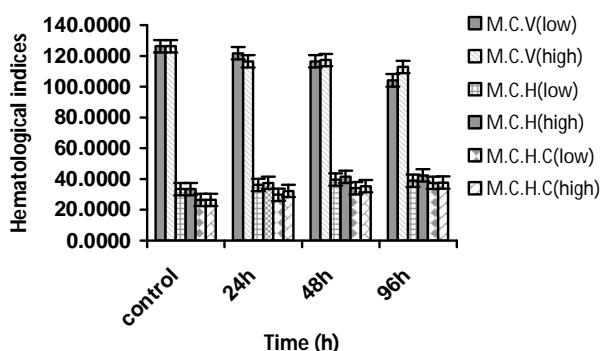
The 96h Lc50 value of copper sulfate to silver carp in the present study was evaluated and located to be  $0.98 \pm 1.98$  mg/l. Blood factors at 10% LC50 (low) and 50%LC50(high) concentrations were measured.

### *Hematological Indices*

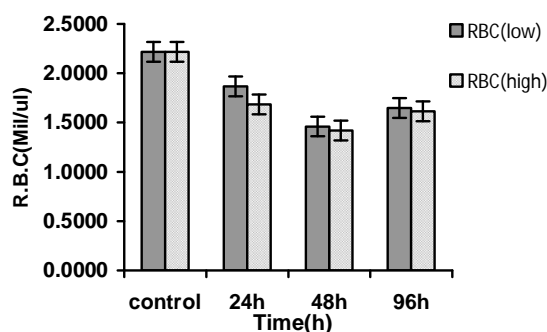
Some of the hematological indices (Ht, Hb, MCV, and RBC) significantly ( $P < 0.05$ ) declined in copper sulfate treated fish from that of the control group in both of the low (10% LC50) and high (50% LC50) concentration (Figures 1-3), whereas other hematological indices (MCH, MCHC, and WBC) in fish exposed to the high concentration of 50% LC50 CuSO<sub>4</sub> and low concentration of 10% LC50 for 96h significantly increased compared to the control group (Figures 2 and 4).



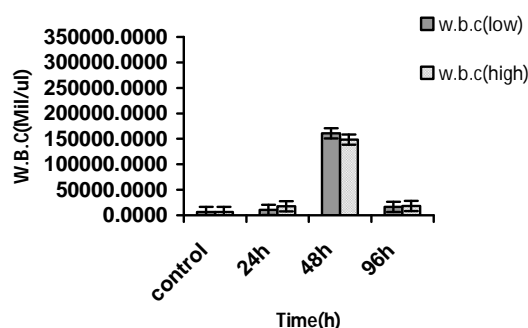
**Figure1.** Hematocrite and hemoglobin changes during exposure to low and high concentrations of copper sulfate in silver carp.



**Figure 2.** MCV, MCH, and MCHC changes during exposure to low and high concentrations of copper sulfate in silver carp.



**Figure 3.** Red blood cell changes during exposure to low and high concentrations of copper sulfate in silver carp.



**Figure 4.** White blood cell changes during exposure to low and high concentrations of copper sulfate in silver carp.

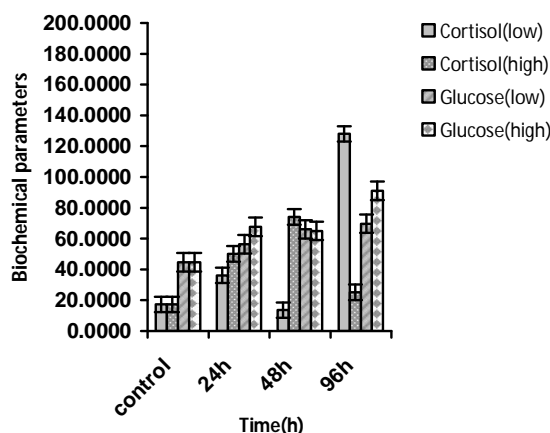
The correlations between CuSO<sub>4</sub> and all parameters were statistically examined by analyzing the data procured during exposure to CuSO<sub>4</sub> for 96h.

At high concentration (50%LC50), MCH and MCHC levels indicated significant positive correlations ( $P < 0.01$ ), whereas RBC, Ht, and MCV levels showed significant negative correlations ( $P < 0.05$ ) with exposure to CuSO<sub>4</sub>. However, at low concentration (10%LC50), RBC and Hb ( $P < 0.05$ ) and Ht and MCV ( $P < 0.01$ ) levels presented significant negative correlations while MCH ( $P < 0.05$ ) and MCHC ( $P < 0.01$ ) levels showed significant positive correlations with exposure to CuSO<sub>4</sub> for 96h.

### *Biochemical Analysis*

Glucose and cortisol levels significantly ( $P < 0.05$ ) increased in the fish treated with both 10% and 50% concentrations of LC50

copper sulfate when contrasted with the fish in the control group (Figure 5). Glucose level at 50% LC50 concentration indicated a significant positive correlation ( $P < 0.01$ ) with exposure to  $\text{CuSO}_4$ . At 10% LC50 concentration, glucose and cortisol showed significant positive correlations ( $P < 0.01$ ) with exposure to  $\text{CuSO}_4$ .



**Figure 5.** Cortisol and glucose changes during exposure to low and high concentrations of copper sulfate in silver carp.

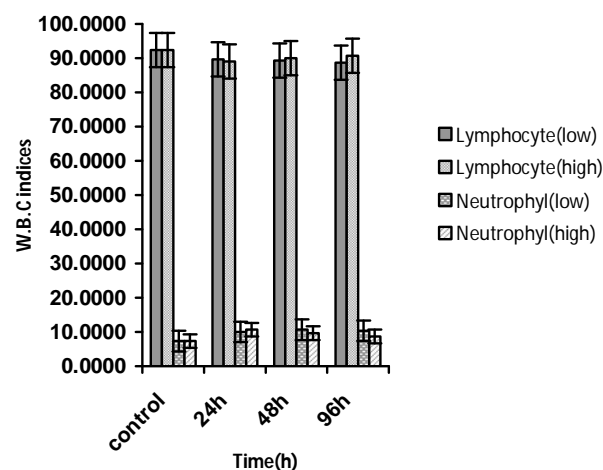
### Immunological Indices

Lymphocyte level significantly ( $P < 0.05$ ) decreased when exposed to 10% and 50% LC50 copper sulfate in comparison with the control group but neutrophil was increased in copper sulfate for 96h (Figure 6).

The neutrophil level at low concentration showed a significant positive correlation ( $P < 0.05$ ) and lymphocyte indicated a significant negative correlation ( $P < 0.05$ ) with exposure to  $\text{CuSO}_4$ . Eosinophils did not show significant correlations at both concentrations.

To determine the relationship between  $\text{CuSO}_4$  concentration and hematological, biochemical, and immunological activities, curve estimation regressions were utilized. At high concentrations, MCHC, MCH, and eosinophils levels indicated a significant linear regression ( $P < 0.05$ )  $Y = a \pm bX$  with  $\text{CuSO}_4$ .

MCHC, glucose, and MCV levels at low concentration showed a significant linear regression ( $P < 0.05$ )  $Y = a \pm bX$  with  $\text{CuSO}_4$ .



**Figure 6.** Lymphocyte and neutrophil changes during exposure to low and high concentrations of copper sulfate in silver carp.

### DISCUSSION

Metal compounds extant in wastes may accumulate in various organs of animals or cause significant alterations in plant and fish biomass production [18]. Statistical findings in this study, indicate that copper is toxic to silver carp (*H. molitrix*). In this study, a number of hematological, biochemical, and immunological parameters were examined in silver carp after exposure to 10% and 50% LC50 doses. The results showed increase in M.C.H, M.C.H.C, neutrophil, cortisol, glucose, eosinophil and decrease in Ht, Hb, lymphocyte, M.C.V, and R.B.C at both concentrations. Blood is a very good indicator of toxic stress and analysis of hematological parameters in fish is greatly used to estimate toxic stress and practical status of the animals' health. During the study period, hemoglobin content and hematocrit values decreased in the fish in the experimental group with the exposure for 96h compared to the controls group.

Exposure to poisons leads to diminished hemoglobin content and hematocrit due to disturbances in haemopoietic processes and acceleration of disintegration of erythrocyte cells [19, 20].

Further lysing of erythrocytes due to toxicant stress may too result in a reduction in hemoglobin and hematocrit amounts in the fish [21].

Erythropania and decreases in haemoglobin and haematocrit levels were the manifestations in *Barbus conchoni* in Gill and Pant's study [22] as well as in *Cyprinus carpio* with sublethal density of carbofuran in the study done by Chandra *et al.* [23].

The erythrocyte level was observed to decline in fishes exposed to demanding qualifications. An anemic condition is usually shown by lower RBC count and hemoglobin amount as seen in fishes exposed to environmental contamination [24]. A significant decline in RBC amount was noticed in this study. The reduction in erythrocyte amount and hematocrit count and, as a result, anemia could be attributed to the following elements: 1) haemodilution of blood caused by weakened osmoregulation and gill harm [25,26] and 2) compensatory reaction enhancing O<sub>2</sub> carrying volume to support the gas exchange, which also shows an alteration in the water blood barrier because of gas exchange in gill lamellae [27].

The high proportion of unripe red blood cells in blood circulation might be the cause for MCV reduction in the present examination.

The related decrease in hematological indices proved the toxic effect of copper that affects both metabolic and hemopoietic activities of silver carp.

In the present study, the significant expansion of MCH shows the bulge of red blood cells or the high concentration of smaller premature erythrocytes containing less hemoglobin in circulation due to hyperplasia in the erythropoietic sites, aroused by high claim for oxygen and carbon dioxide delivery [28].

The notable addition of MCHC value might be followed from sphaerocytosis as implied by Sobecka [29]. The results of the present study indicated an increase in differential neutrophils and a decline in lymphocytes.

The significant increase in WBC count reflects a widespread state of toxemia to an adjustment manifested in leucocytosis for coping with such a stressful situation by the fish [30]. Lymphocytes are the most common current leukocytes established in fish. The heterophils have been changeably nominated

heterophil or neutrophil conditional upon the size of cytoplasmic granules in fishes. Unlike fowl and reptile heterophils, fish heterophils include a big quantity of myeloperoxidase and their macrophages manufacture nitric oxide and reactive oxygen [31].

There is an absence of knowledge respecting the full work of fish eosinophils, but they peer to work in a mode similar to mammalian mucosal mast cells. The eosinophils have been associated with antigenic arousal and parasitic invasions [32].

The monocyte and neutrophil expansion and lymphocyte reduction during exposure to different stressors have been confirmed in cultured fish *Oreochromis aureus* [33].

It is assumed that neutrophils and monocytes have phagocytic stir which might describe their increased percentage during the exposure period.

Brandão *et al.* [34] observed a reduction in some immunological parameters (platelet, leukocyte, and lymphocyte counts) and an enlargement in neutrophil and monocyte percentages in exposure to HgCl<sub>2</sub>.

The consequential decline of mononuclear (differential lymphocytes plus monocytes) and multiplied of differential neutrophils to methyl mercury and inorganic lead were noted by Oliveira Ribeiro *et al* [9].

Glucose is liberated by corticosteroids that their elevation has been delineated as a primary answer to most stressors [35].

Hypothalamus-pituitary-interrenal axis, started by multiple stressors, elevated blood levels of cortisol. This endocrine reaction continued by a spurt of catecholamine-stimulated steps (lipolysis, glycogenolysis, and gluconeogenesis), which are prominent energy mobilizing procedures [36]. Increased blood glucose concentrations result from an instability between the hepatic yield of glucose and the peripheral uptake of the sugar [37]. Mostly, the existence of contaminants in aquatic environment exercises its effect at cellular or molecular level which results in an important alterations in biochemical response. For monitoring aquatic environments, analysis of biochemical ways, it offers as consequential biomarkers. However, to date, few perusals have used dietary exposure to examine the

effects of pollutants in aquatic organisms [38], and the present findings indicated that under experimental conditions, blood parameters were susceptible to different effects of copper.

## CONCLUSION

The main findings of this study is that copper concentrations (low and high) may cause some alternations in the hematological, biochemical and immunological parameters of the studied fish. Therefore, assessment of these indices could supply a useful indicator of copper of aquatic environments. It appears that MCHC is an appropriate biomarker of copper in silver carp (*H. molitrix*).

## ACKNOWLEDGMENTS

The writers express gratitude to the Aquaculture Research Center and the Department of Fishery of Gorgan University of Agricultural Sciences and Natural Resources for supplying the experimentation materials. This project was financially supported by the Iranian National Elite Foundation (Bonyad Melli Nokhbegan) via a grant for young elite assistant professors.

## REFERENCES

1. Dueck TA, Tensen D, Duijff B, Pasman F. Nutrient fertilization, copper toxicity and growth in three grassland species in the Netherlands. *Journal of applied ecology*. 1987;1001-10.
2. Teisseire H. Toxicologie et Écotoxicologie Des Pesticides et des métaux lourds susceptibles d'être présents dans le vignoble champenois: étude de leur impact physiologique sur un vegetal. 1999.
3. Grosell M, Hogstrand C, Wood C. Renal Cu and Na excretion and hepatic Cu metabolism in both Cu acclimated and non acclimated rainbow trout (*Oncorhynchus mykiss*). *Aquatic toxicology*. 1998;40(2):275-91.
4. Perkins E, Griffin B, Hobbs M, Gollon J, Wolford L, Schlenk D. Sexual differences in mortality and sublethal stress in channel catfish following a 10 week exposure to copper sulfate. *Aquatic toxicology*. 1997;37(4):327-39.
5. Lopes PA, Pinheiro T, Santos MC, da Luz Mathias M, Collares-Pereira MJ, Viegas-Crespo AM. Response of antioxidant enzymes in freshwater fish populations (*Leuciscus alburnoides* complex) to inorganic pollutants exposure. *Science of the total environment*. 2001;280(1):153-63.
6. Varanka Z, Rojik I, Varanka I, Nemcsók J, Ábrahám M. Biochemical and morphological changes in carp (*Cyprinus carpio* L.) liver following exposure to copper sulfate and tannic acid. *Comparative Biochemistry and Physiology Part C: Toxicology & Pharmacology*. 2001;128(3):467-77.
7. Zelikoff JT. Metal pollution-induced immunomodulation in fish. *Annual Review of Fish Diseases*. 1993;3:305-25.
8. Sancho E, Ceron J, Ferrando M. Cholinesterase Activity and Hematological Parameters as Biomarkers of Sublethal Molinate Exposure in *Anguilla anguilla*. *Ecotoxicology and environmental safety*. 2000;46(1):81-6.
9. Oliveira Ribeiro C, Filipak Neto F, Mela M, Silva P, Randi M, Rabitto I, et al. Hematological findings in neotropical fish *Hoplias malabaricus* exposed to subchronic and dietary doses of methylmercury, inorganic lead, and tributyltin chloride. *Environmental research*. 2006;101(1):74-80.
10. Kavitha C, Malarvizhi A, Senthil Kumaran S, Ramesh M. Toxicological effects of arsenate exposure on hematological, biochemical and liver transaminases activity in an Indian major carp, *Catla catla*. *Food and Chemical Toxicology*. 2010;48(10):2848-54.
11. Aryanta RW, Fleet GH, Buckle KA. The occurrence and growth of microorganisms during the fermentation of fish sausage. *International journal of food microbiology*. 1991;13(2):143-55.
12. Hedayati A, Safahieh A, Savari A, Ghofleh Marammazi J. Detection of mercury chloride acute toxicity in yellowfin sea bream (*Acanthopagrus latus*). *World J Fish Mar Sci*. 2010;2(1):86-92.
13. Hedayati A, Safahieh A. Serum hormone and biochemical activity as biomarkers of mercury toxicity in the yellowfin seabream *Acanthopagrus latus*. *Toxicology and Industrial Health*. 2012;28(4):306-19.
14. Stevens ML. *Fundamentals of clinical hematology*: Saunders Philadelphia, PA; 1997.
15. Fairbanks V, Beutler E, Lichtman M, Coller B, Kipps T, Seligsohn U. *Williams Hematology*. Williams-Hematology. 2001.
16. Goldenfarb P, Bowyer F, Hall E, Brosious E. Reproducibility in the hematology laboratory: the microhematocrit determination. *American Journal of Clinical Pathology*. 1971;56(1):35-9.

17. Richard L, Foerster J, Lukens J. Wintrobe's Clinical hematology. Baltimore Philadelphia: Williams & Wilkins a waverly company; 1998.
18. Barman S, Lal M. Accumulation of heavy metals(Zn, Cu, Cd and Pb) in soil and cultivated vegetables and weeds grown in industrially polluted fields. *Journal of Environmental Biology*. 1994;15(2):107-15.
19. Banaee M, Mirvagefei A, Rafei G, Majazi Amiri B. Effect of sub-lethal diazinon concentrations on blood plasma biochemistry. *International Journal of Environmental Research*. 2008;2(2):189-98.
20. Köprücü SŞ, Köprücü K, Ural MŞ, İspir Ü, Pala M. Acute toxicity of organophosphorous pesticide diazinon and its effects on behavior and some hematological parameters of fingerling European catfish ( *Silurus glanis* L.). *Pesticide Biochemistry and Physiology*. 2006;86(2):99-105.
21. Kori-Siakpere O, Ubogu EO. Sublethal haematological effects of zinc on the freshwater fish, *Heteroclinus* sp.(Osteichthyes: Clariidae). *African Journal of Biotechnology*. 2008;7(12): 2068-73.
22. Gill TS, Pant JC. Hematological and pathological effects of chromium toxicosis in the freshwater fish, *Barbus conchoni* Ham. *Water, Air, and Soil Pollution*. 1987;35(3-4):241-50.
23. Chandra S, Ram R, Singh I. Toxic effect of carbofuran on certain hematological parameters in yearlings of *Cyprinus carpio*. *Aquacult*. 2001;2(2):137-40.
24. Ramesh M. Toxicity of copper sulphate on some haematological parameters of a freshwater teleost *Cyprinus carpio* var. *communis*. *Journal of the Indian Fisheries Association Bombay*. 2001;28:131-6.
25. Morgan DP, Stockdale EM, Roberts RJ, Walter AW. Anemia associated with exposure to lindane. *Archives of Environmental Health: An International Journal*. 1980;35(5):307-10.
26. Wedemeyer GA, Yasutake WT. Clinical methods for the assessment of the effects of environmental stress on fish health. *Tech Pap USFWS*. 1977(89): 1-18.
27. Jee JH, Masroor F, Kang JC. Responses of cypermethrin-induced stress in haematological parameters of Korean rockfish, *Sebastes schlegeli* (Hilgendorf). *Aquaculture Research*. 2005;36(9):898-905.
28. Ferrando M, Andreu-Moliner E. Effect of lindane on the blood of a freshwater fish. *Bulletin of environmental contamination and toxicology*. 1991;47(3):465-70.
29. Sobecka E. Changes in the iron level in the organs and tissues of wels catfish, *Silurus glanis* L. caused by nickel. *Acta Ichthyologica et Piscatoria*. 2001;31(2):127-43.
30. Abhijith BD, Ramesh M, Poopal RK. Sublethal toxicological evaluation of methyl parathion on some haematological and biochemical parameters in an Indian major carp *Catla catla*. *Comparative Clinical Pathology*. 2012;21(1):55-61.
31. Campbell TW, Murru BS. An introduction to fish haematology. *Comp Cont Ed Vet Sci*. 1990; 12: 525-33.
32. Ellis A. The immunology of teleosts. *Fish pathology*. 1989;2:135-52.
33. Silveira-Coffigny R, Prieto-Trujillo A, Ascencio-Valle F. Effects of different stressors in haematological variables in cultured *Oreochromis aureus* S. *Comparative Biochemistry and Physiology Part C: Toxicology & Pharmacology*. 2004;139(4):245-50.
34. Brandão R, Borges LP, Nogueira CW. Concomitant administration of sodium 2, 3-dimercapto-1-propanesulphonate (DMPS) and diphenyl diselenide reduces effectiveness of DMPS in restoring damage induced by mercuric chloride in mice. *Food and chemical toxicology: an international journal published for the British Industrial Biological Research Association*. 2009;47(8):1771-8.
35. Donaldson EM. The pituitary-interrenal axis as an indicator of stress in fish. In: Pickering AD. *Stress and Fish*. London:Academic. 1981. p. 11-47.
36. Sheridan MA. Effects of thyroxin, cortisol, growth hormone, and prolactin on lipid metabolism of coho salmon, *Oncorhynchus kisutch*, during smoltification. *General and comparative endocrinology*. 1986;64(2):220-38.
37. Afaghi A, Zare S, Heidari R, Asadpoor Y, Viayeh RM. Effects of copper sulfate (CuSO<sub>4</sub>) on the levels of glucose and cortisol in common carp, *Cyprinus carpio*. *Pakistan journal of biological sciences: PJBS*. 2007;10(10):1655-60.
38. Rabitto I, Alves Costa J, Silva de Assis H, Pelletier E, Akaishi F, Anjos A, et al. Effects of dietary Pb (II) and tributyltin on neotropical fish, *Hoplias malabaricus*: histopathological and biochemical findings. *Ecotoxicology and environmental safety*. 2005;60(2):147-56.